

# southern power district

## lighting the way

### Trimming Future Problems

We all enjoy the beauty trees add to our region, especially during the upcoming fall season. But, we also enjoy the comfort of knowing power will be available when we need it. At Southern Power District, we're committed to providing you with reliable power. There are some things we can't stop...high winds, ice storms, and tornadoes, but we do what we can to prevent other outage culprits.

As you can probably guess, weather-related events cause the majority of power outages for power districts, a whopping 19 percent according to a survey by our national service organization, the National Rural Electric Cooperative Association. But vegetation-trees, shrubs, brush-growing too close to power lines and distribution equipment leads to 15 percent of power interruptions.

To reduce the potential for tree-related problems, we operate an aggressive tree trimming program. Our crews look for foliage growing under lines, overhanging branches, leaning or other types of "danger" trees that could pull down a power line if they fall, and trees that could grow into lines. It's a job that's never done. By the time crews finish trimming activities along our 7,000 miles of distribution lines, vegetation has started to grow back at the starting point.

In working to keep a safe, reliable, and affordable supply of power flowing to your home or business, we need your help. Let us know if you notice trees or branches that might pose a risk to our power lines. Even more important, before planting trees in your yard, think about how tall they may grow and how wide their branches may spread. As a rule of thumb, 25 feet of ground-to-sky clearance should be available on each side of our utility poles to give power lines plenty of space. Choose tree varieties with care and plant with power lines in mind.

Thanks for your help as we work together to keep electricity reliable. To report trees you think may pose a problem, call Southern Power District. To find out more about proper tree planting, visit [www.arborday.org](http://www.arborday.org).

PHOTOS: A crew is shown working on a tree trimming project north of Grand Island in August. Luke Kathol and Hunter Prince move trimmed branches to the chipper.



TURN TO PAGE 2 TO SEE SOME SUGGESTIONS FOR PLANTING TREES A SAFE DISTANCE FROM POWER LINES.

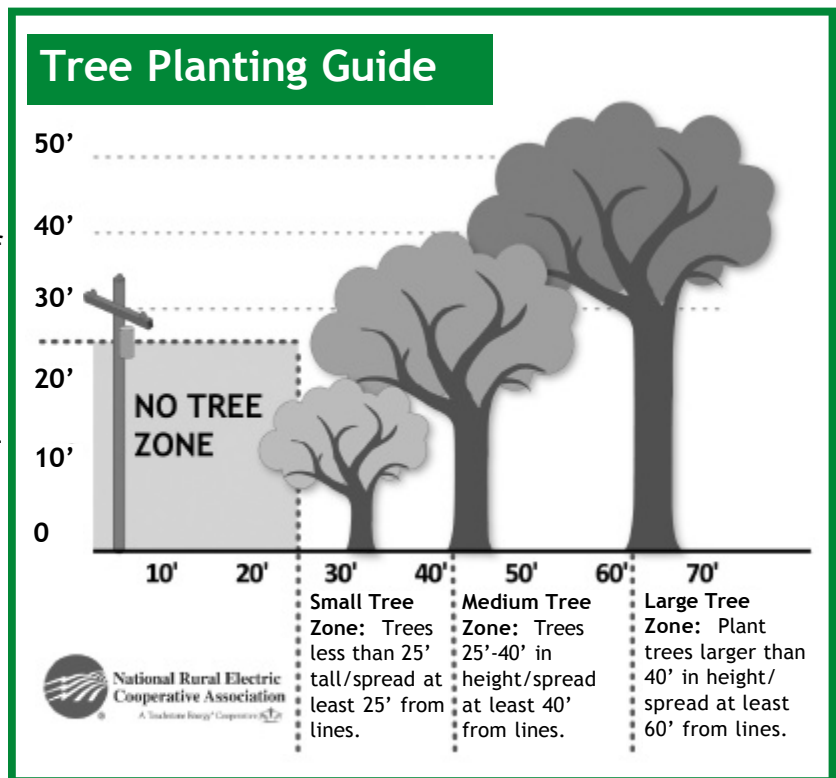
## Planting Savings

You've upgraded your appliances, insulation, and lighting to help lower your monthly electric bill. What else can you do? Plenty, if you have a yard with landscaping options. The right combination of plants and trees can unearth hidden energy savings.

Climate determines the direction your landscaping planning should take. The United States is divided into four different types of regions: temperate, hot-arid, hot-humid, and cool.

Since we live in the temperate band of the Midwest, we should maximize the warmth of winter sun. Likewise, summer shade should be utilized. Winter winds should be deflected from buildings, while summer breezes need to be brought toward a home.

There is much you can learn about using trees and landscaping to your benefit in saving energy. Find out more about climate, microclimates, shading dos and don'ts, and windbreaks at [www.energysavers.gov](http://www.energysavers.gov). To learn more ways to save energy around your home, visit [www.TogetherweSave.com](http://www.TogetherweSave.com).



## EnergyWise Tip: Weatherize Your Home and Use Less Energy

*Properly sealing and insulating your home is a cost-effective way to become more energy efficient.*

According to ENERGY STAR®, homeowners can realize a potential savings of up to 20 percent on heating and cooling costs (or up to 10 percent on their total annual energy bill) by improving the sealing and insulation of a home.

First, help make your house weather tight. Many air leaks and drafts in the home are easy to find because they are easy to feel - like those around windows and doors. Other leaks may take some hunting to find - like holes hidden in attics, basements and crawlspaces. Sealing any of these leaks with caulk, spray foam or weather stripping will have a great impact on improving your comfort and reducing utility bills.

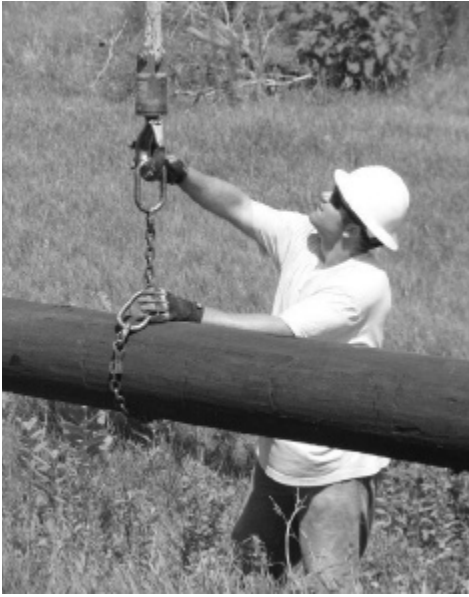
Second, after any home sealing project, have a heating and cooling technician check to make sure your combustion appliances (gas- or oil-fired furnace, water heater and clothes dryer) are venting properly. Improper venting of combustion appliances can pose a health risk.

Third, here's a good EnergyWise<sup>SM</sup> rule of thumb: Don't scrimp on the insulation! Insulation helps keep your home warm in winter and cool in summer. There are several common types of insulation - fiberglass (in both batt and blown forms), cellulose, rigid foam board and spray foam. When correctly installed with air sealing, each type of insulation can deliver comfort and lower energy bills throughout the majority of the year.

To get the biggest savings, the easiest place to add insulation is usually the attic. A quick way to see if you need more insulation is to look across your uncovered attic floor. If your insulation is level with or below the attic floor joists, you probably need to add more insulation.

For more information on steps homeowners can take to improve the energy efficiency of their homes, contact your local electric public power utility or visit the ENERGY STAR® Home Advisor at <http://www.energystar.gov/homeadvisor>.

## Around The District



## Naponee...

Jake Bradley is pictured at far left preparing a pole to be lifted on a project east of Naponee in July. Jake is also pictured in the second photo, observing as Jason Strode and Rod Preusker, summer interns for the district, work on digging to set the pole. There was a steep drop-off next to the spot where the men were digging, as you can see from Jake's perspective.

## Aurora West

This was a big day at SPD, when two large transformers were moved from a site south of Aurora to the Aventine Ethanol site at Aurora West. Large cranes were used to lift the transformers onto trucks and delivered to the site. At far right is Central City's Ryan Mildestein, along with a crew member from MRL Crane, hooking up the transformer to be lifted off the truck at Aurora.



## Grand Island, Giltner

Our Grand Island crews were busy in early August framing poles at several job sites in their area.

At far left is Jake Nelson, Ethan Hoins and Lonnie Hennings framing west of Grand Island. And next is Clay Teel, Terry Fierstein and Cody Buhrman framing west of Giltner. These two photos were taken during the unbearable heat wave that struck in early August.

### Board of Directors:

Dean Klute, Chairman  
Lynn Chrisp, Vice-Chairman  
Rick Bergman, Secretary  
Lee Grove, Treasurer  
Larry Benson, Adrian Choquette,  
Marvin Fishler, Neal Katzberg,  
John L. Kuehn, Mike Lowry,  
Dirk Nickel, Robert Overleese,  
Richard Schaffert, and  
Raye Woodman

### President/CEO:

Gary Hedman

### Service Centers:

Grand Island	(308)384-2202
Central City	(308) 946-2964
Franklin	(308) 425-6217
Hastings	(402) 751-2535
Holdrege	(308)-995-5112
Toll Free	1-888-484-2470

### General Office:

384-2350 or 1-800-652-2013

### Customer Service:

381-5942, 1-800-579-3019, or  
customerservice@southernpd.net

### On the web, at:

www.southernpd.com

### Credit Card Payment:

www.southernpd.com



This newsletter is  
published monthly by

**SOUTHERN  
POWER DISTRICT**  
as a service to its customers

Comments or questions? Contact:  
LeAnne Doose, editor  
(308) 384-2350, 1-800-652-2013  
PO Box 1687  
Grand Island, NE 68802-1687

Visit us on Facebook, follow us  
on Twitter or watch us on  
YouTube!

## GenerLink Transfer Switch!

If you would like to use a generator to get through the inconvenience of a storm-related outage, but are concerned about hooking up the device safely, we have a new program for you to consider. The new service is called GenerLink™, and is a device which makes connecting a generator to your home easier and safer. It is a collar-shaped device that is installed behind your meter by Southern personnel.

GenerLink™ automatically disconnects your home from the District's facilities while a generator is operating. It eliminates the use of multiple extension cords to individual appliances, and prevents electricity from feeding back onto the utility grid, making the job of power restoration safer for our linemen.

The GenerLink™ has a maximum capacity of 40 Amps (9,600 watts), and is intended for small residential and limited agricultural use. It also provides surge protection with a Manufacturer's Limited Warranty 15-Year Product Coverage.

Southern is offering the GenerLink Transfer Switch to its customers--for residential or limited agricultural use--for \$7.75 per month with a 24-month lease agreement. The monthly charge will be applied to your monthly electric bill. Additionally, a deposit for the power cord will be required.

Southern will install and test this unit, with your generator, and help you determine which of your breakers can be operated. The unit will be inspected by Southern Power District on an annual basis to assure that it is working properly when you need it during a future, lengthy power outage.

If you are interested in learning more about the GenerLink™ or would like to sign up for this service, please contact Sam Reinke at Southern Power District at 1-800-579-3019.



## RECIPE BOX

### Zucchini Brownies

Thank you to Sandra Warford for submitting this recipe!

2 c. zucchini, grated	1-1/2 tsp. baking soda
1/2 c. milk	1/2 c. cocoa
2 c. flour	1/2 c. nuts (opt.)
1 tsp. salt	2 tsp. vanilla
1 & 1/2 c. sugar	1/2 c. oil.

Mix and bake @350 degrees in 9x13 pan.  
Frost while warm with your favorite chocolate frosting recipe.